



GRINDMASTER®
BY GMCW™

Operator Manual

800 Series Coffee Grinders

Models 810, 835, 875, 890



Model 810



Model 835



Model 875



Model 890



Table of Contents

Specifications.....	2	Cleaning & Maintenance.....	5
Safety Information.....	3	Troubleshooting Guide.....	6
Installation.....	3	Parts Diagram and List	7
Operation	4	Wiring Diagram.....	10

Thank you for purchasing this quality coffee grinder. For your safety and the safety of others, read all warnings and the operator's manual before installing or using the product. Properly instruct all operators. Keep training records. For future reference, record serial number here:

GMCW

4003 Collins Lane, Louisville, KY 40245 USA
Phone: 502.425.4776 Toll Free: 800.695.4500
Fax: 502.425.4664
Web: gmcw.com Email: info@gmcw.com

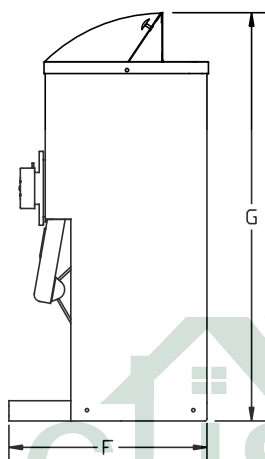
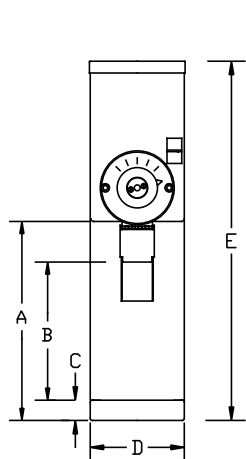
GMCW provides the industry's BEST warranty. Visit gmcw.com for warranty terms and conditions.



GMCW™

Specifications

Model	Description	Electrical
810S	Medium duty grinder - 1.5 lbs hopper. C-UL US, ETL Sanitation Certification	120V / 920 W / 8A / 1 Ph
835S	Medium duty grinder - 1.5 lbs hopper. C-UL US, ETL Sanitation Certification	120V / 920 W / 8A / 1 Ph
875S	Medium duty grinder - 3 lbs hopper. C-UL US, ETL Sanitation Certification	120V / 920 W / 8A / 1 Ph
890BS	Medium duty grinder with European slicing burrs - 3 lbs. hopper. C-UL US, ETL Sanitation Certification	120V / 920 W / 8A / 1 Ph
890T	Medium duty grinder with European slicing burrs - 5 lbs. hopper. C-UL US, ETL Sanitation Certification	120V / 920 W / 8A / 1 Ph



Dimensions (Inches)							
	A	B	C	D	E	F	G
810	11 1/2	8	-	7	21 1/4	12 1/2	25
835	10	8 1/4	1 1/2	7	21 1/4	15	25
875	13	8 1/4	1 1/2	7	27	15	30 3/4
890	13	8 1/4	1 1/2	7	27	15	30 3/4
890T				7	31 1/4	14	35

Safety Information

Important Safety Information



This is the safety alert symbol. It is used to alert you to potential personal injury hazards. Obey all safety messages that follow this symbol to avoid possible injury or death.

For your safety and the safety of others, read all warnings and the operator's manual before installing or using the product.

DANGER: This term warns the user of imminent hazard that will result in serious injury or death.

WARNING: This term refers to a potential hazard or unsafe practice, which could result in serious injury or death.

CAUTION: This term refers to a potential hazard or unsafe practice, which could result in minor or moderate injury.

NOTICE: This term refers to information that needs special attention or must be fully understood.

WARNING

- Product must be attached to a three wire 120V 15 AMP receptacle (export units - 230V 16 AMP).
- Do not deform plug or cord.
- Follow national and local electrical codes.
- Do not use near combustibles.
- Use only on a circuit load that is properly protected and capable of the rated load.
- Always unplug unit from power supply before servicing or cleaning.

FAILURE TO COMPLY RISKS PERSONAL INJURY, SHOCK HAZARD, FIRE, OR DAMAGE TO EQUIPMENT.


CAUTION

Personal injury hazard. Keep fingers, hands, and foreign objects out of hopper or chute opening.
Model 890T must be bolted to the counter to prevent possible bodily injury from overturning.

NOTICE

Never connect to an overloaded circuit or to an extension cord, otherwise serious damage to the motor may result.

Installation

 CAUTION: Risk of bodily injury due to tipping. Use care when installing Model 890T.

NOTICE: It is essential that full voltage and amperage always be available as it takes full power to grind coffee.

Please read this manual before operating the grinder.

1. Carefully remove grinder from carton.
2. Place grinder in position on shelf, counter or other flat surface.
3. (Model 890T only). Using (4) provided 5/16"-18 x 1 1/2" bolts, washers, and nuts, attach grinder securely to counter.
4. Plug grinder into the specified power source. (Check rating plate on back of unit for voltage and amperage requirements.) Do not use an extension cord.
5. Fill hopper with whole bean coffee.
6. Grind a small amount of whole bean coffee

following operating instructions as described in this manual

7. If there is any problem, consult the Troubleshooting Guide in this manual, (also on back of grinder.)

If you need help, call GMCW Technical Service Department for help, (502) 425-4776 or (800) 695-4500 (USA & Canada only) 8 AM - 6 PM EST.

Prior authorization must be obtained from GMCW for all warranty claims.

Operation

Your new coffee grinder is easy to operate and maintain. Before you place it in service, please have all personnel familiarize themselves with these instructions. Keep this manual in a convenient place for ready reference.

How to Operate

1. Turn the selector knob to the desired grind setting.
2. Fill the hopper with the desired type and amount of whole bean coffee. Close the lid.
3. Place the bag underneath the spout.
4. Press the start button. *810 model - Press the grinder switch to the ON position.
5. The grinder will automatically stop when the bag is removed.**
* 810 model - Once coffee is ground, press the grinder switch to the off position or grinder will continuously run.
** On models 835 and 875 the stop button may be pressed after the grinder has completed grinding.
6. Remove bag from coffee spout once coffee is ground.

Grinds

Before shipment, this grinder has been tested with coffee and has been accurately adjusted to deliver ground coffee to normal auto drip specifications.

The Grinding Burrs are made of an extremely hard and wear resistant material. From time to time, grind adjustments (see following instructions) may be necessary. If the grind runs coarser than expected after normal adjustment and the grind time has increased, the burrs may have excess wear and should be replaced. New burrs should always be installed as a pair, never one or the other, as they are accurately ground and lapped in pairs. Old burrs cannot be resharpened.

Grind Adjustment

Tools required: Phillips screwdriver

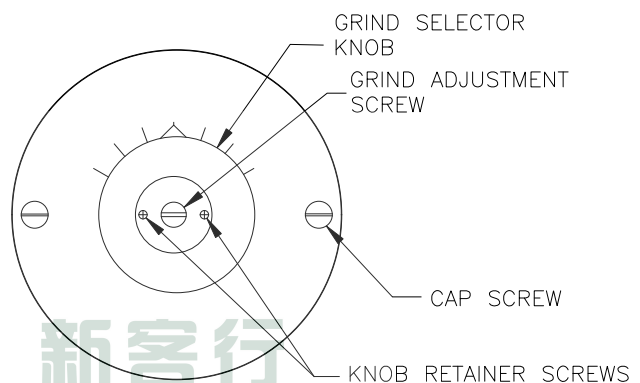
Large blade screwdriver
Pliers

1. Remove all coffee from the hopper.
2. Set selector knob to the finest setting (Espresso or Turkish) depending on the model.
3. Loosen both knob retainer screws in selector knob one turn only.
4. While pressing the bag switch, located behind the spout, press the start button so that the grinder will run during

adjustment.

*810 model - Press the on or start button so that the grinder will run during adjustment.

5. With the grinder still running, turn the adjusting screw in the center of the selector knob slowly to the right until a slight chirping noise is heard. Immediately turn the adjusting screw to the left until chirping noise stops. This is the finest grind obtainable.
6. Tighten both of the knob retainer screws. Once the finest grind has been set, the other grind settings will automatically set correctly.



7. Press the stop or off button.

NOTICE: Always be sure the grinding burrs are not touching while the machine is running on the ESPRESSO/TURKISH setting. Otherwise serious damage to the motor may result.

Protection

This grinder is equipped with both a circuit breaker and a shear disc or shear pin to protect motor and burrs.

Circuit Breaker

This grinder is equipped with a circuit breaker to protect the motor from overloading. When the circuit breaker trips, the reset button will pop out approximately 1/4" which stops the power to the grinder. The reset button is located on the front panel of the Model 810, 835 and 875. To reset the circuit breaker, wait two minutes then push in the reset button. You will hear a click as it resets. If the grinder does not operate after resetting the circuit breaker, there may be an obstruction in the grinding mechanism that is stalling the motor. Turn the grind selector knob all the way to the left. Try restarting the grinder. If the circuit breaker "trips" again, the obstruction was not able to pass. In this case, the Grinder Head should be cleaned out as described in the **Shear Disc Replacement** section of this manual.

Cleaning & Maintenance

Cleaning Instructions

NOTICE: The person cleaning the parts should do so with clean hands.

The outside of the machine can be cleaned with warm soapy water and a damp cloth.

Grinding parts should be cleaned with a stiff brush or dry cloth. **DO NOT USE WATER.** See **Shear Disc Replacement** for instructions on assembling and disassembling grinder parts. Before reassembling, wipe motor shaft with dry cloth.

All other parts that are in contact with food must be washed with warm soapy water, rinsed, and air-dried.

Lubrication

None required.

Shear Disc Replacement

If the motor should run and no coffee is dispensed, the Shear Disc may have sheared. Should this occur, perform the following operations in the sequence given (refer to following drawing).

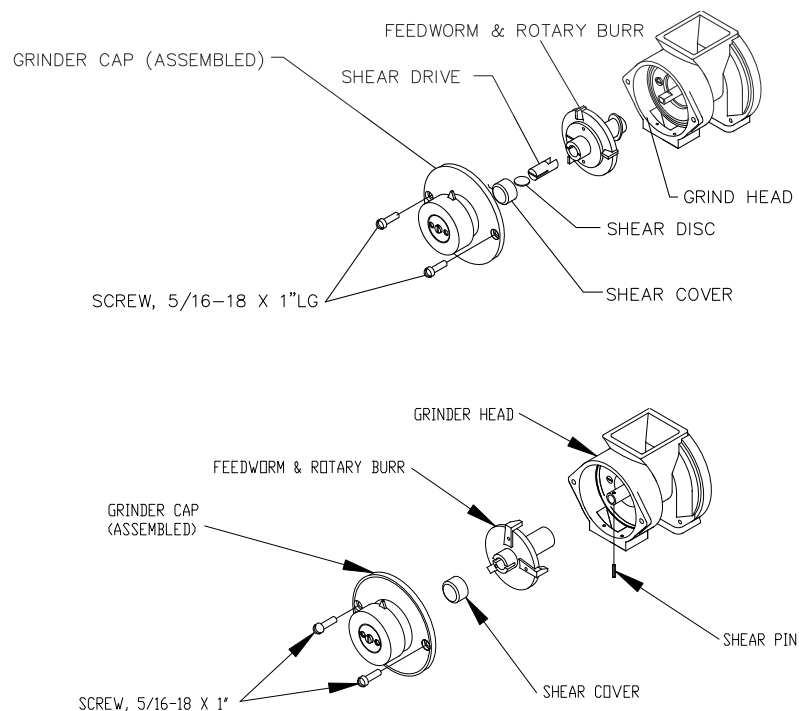
Tools Required: Slotted Screwdriver
 Pliers

⚠ WARNING: Unplug grinder to prevent electrical shock.

1. Remove all of the coffee beans from the hopper.
2. Remove the Grinder Cap by taking out the 2 Cap Screws.
3. (Model 890) Turn Feedworm Assembly such that the slot in the assembly is vertical then

push inward to release the Shear Pin.

4. Pull out the Rotary Burr and Feedworm Assembly. Clean out the Grinder Head, removing all coffee particles from inside of the Grinder Head and the Grinder Cap so that it can be reset properly.
5. Check that no obstruction has been caught on the surface of the teeth of either burr. Remove the Shear Cover and broken pieces of the Shear Disc or Shear Pin. You are now ready to reassemble the grinder mechanism.
6. Slide the Rotary Burr and Feedworm Assembly onto the Drive Shaft.
(Model 810, 835, 875) Insert the shear drive so that the Motor Shaft tongue engages into the shear drive notch.
7. (Model 810, 835, 875) Insert a new Shear Disc by aligning the slot in the Shear Drive with the slot in the hub of the Feedworm.
(Model 890) Align slot in Feedworm Assembly with the hole in the motor shaft. Install new Shear Pin.
8. Reassemble the Shear Cover and Grinder Cap. Make certain the Grinder Cap is screwed on tight and is sealed properly against the head and not tilted or misaligned. Otherwise, a proper grind cannot be obtained.
9. Your grinder is now ready to grind.



Troubleshooting Guide

Before you call for help, please read the following:

⚠ WARNING: Unplug power cord from outlet before cleaning or servicing your grinder.

Problem	Possible Cause	Solution
Grinder will not start when START button is pushed	Bag not under spout. Plug not in outlet properly. No power to outlet.	Place bag underneath spout. Install plug in outlet. Check outlet with lamp or radio to verify outlet has power.
Grinder runs or hums but no coffee is dispensed	Circuit breaker has tripped. Shear disc is broken. Obstruction in opening to grinding chamber.	Reset circuit breaker by pushing in reset button until you hear a click. Replace shear disc. See Shear Disc Replacement or instructions on back of grinder. Unplug unit. Empty beans out of hopper and clear obstructions. See Shear Disc Replacement for disassembly and assembly instructions.
Excessive amount of coffee chaff flying about	Defective chaff mixer spring. Outlet not properly grounded. Static electricity.	If bent, broken, or missing, replace spring. If stuck open with coffee, clean out coffee to free spring. Check power cord end and outlet for proper ground. Tighten all nuts, bolts, and screws and verify outlet is grounded.
Circuit breaker continuously trips	Insufficient amperage due to use of extension cord. Insufficient amperage due to overloaded line. Grind setting needs adjustment.	Plug unit directly into outlet. Do not use extension cord. Designate single line for grinder. Do not use multi-outlet box. Adjust grind to coarser setting (see Grind Adjustment).

If you still need help, call GMCW Technical Service Department, (502) 425-4776 or (800) 695-4500 (USA & Canada only) (Monday through Friday 8 AM - 6 PM EST). Please have the model and serial number ready so that accurate information can be given.

Prior authorization must be obtained from GMCW for all warranty claims.

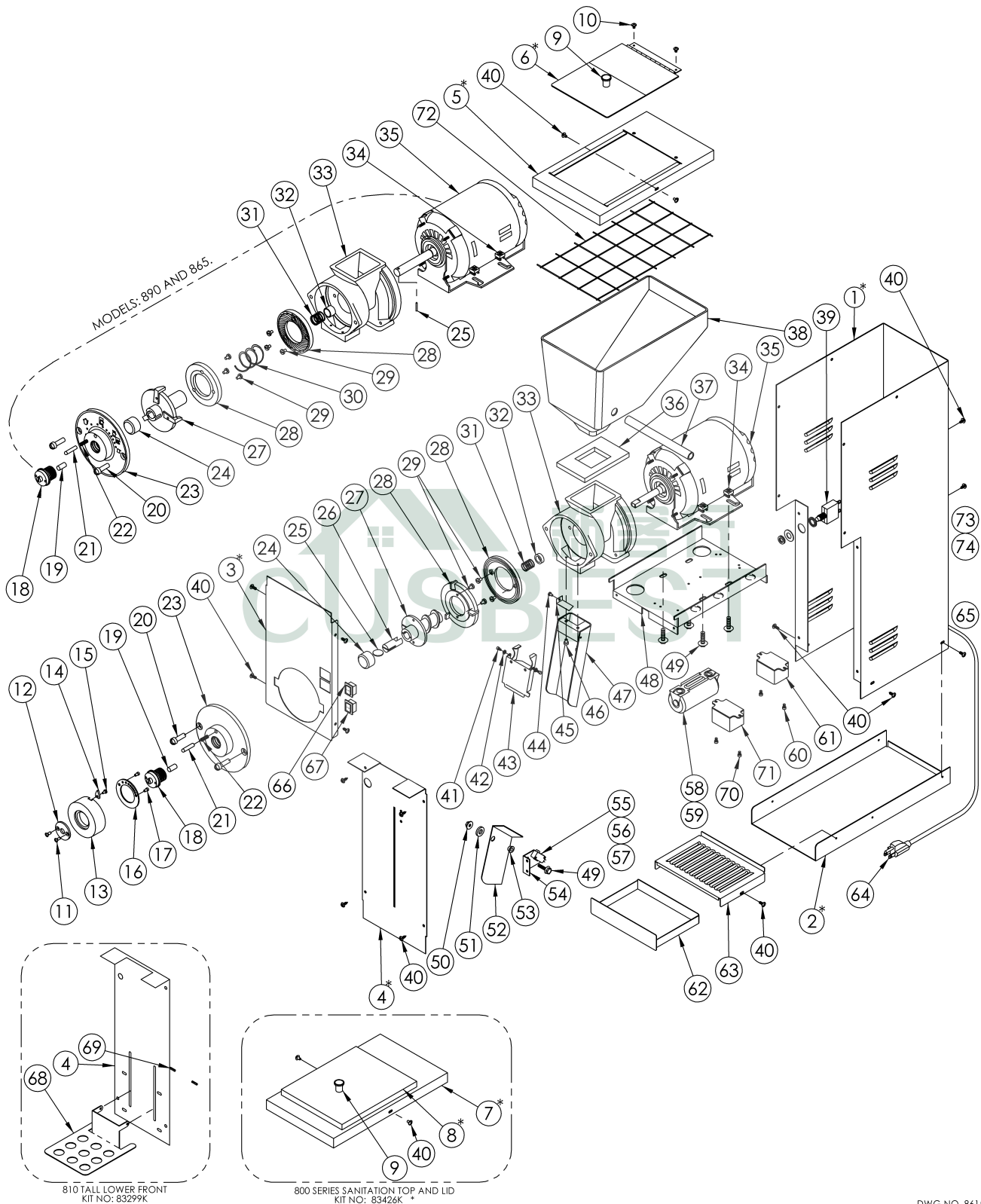
GMCW provides the industry's BEST warranty. Visit our website at GMCW.com for warranty terms and conditions.

Parts Diagram and List

800 SERIES EXPLODED VIEW

PART NUMBERS INDICATED BY AN ASTERISK (*) ARE PAINTED COMPONENTS AND COLOR MUST BE SPECIFIED WHEN ORDERING.

NOTE: REFER TO THE PART NUMBER SHEET ON THE FOLLOWING PAGE WHEN ORDERING.



DWG NO. 86151

Parts Diagram and List (continued)

800 Series

Item #	DESCRIPTION	120V GROCERY GRINDER PART NUMBERS						230V GROCERY GRINDER PART NUMBERS						
		810-BS	835-BS	875-BS & 875-RS	890-BS	890-B-T	810E-BG	835-B-230VG	835-R-230VG	835-R-230VS	875-B-230V	875-R-230V	890E-BG	
1 *	Casing, grocery	83332 *		83362*		82356*	83332 *	83332 *			83362 *			
2 *	Base	83302 *	83321 *			82355*	83302 *	83321 *			83321 *			
3 *	Front panel	83316 *	83301 *	83363 *		82362*	83316 *	83301 *			83363 *			
4 *	Lower front	83305 *	80072	80073		82360	83305 *	80072			80073			
5 *	Top, bifold lid	-					83308BK or 88308RK					-		
6 *	Lid, bifold hinge	-					88704BK or 88704RK					-		
7 *	Top, 800 series sanitation	83451BK or 83451RK					-					83451 *		
8 *	Lid, 800 series sanitation	83450BK or 83450RK					-					83450 *		
9	Knob, lid	86223			86246		86223					86246		
10	Screw, #8 x 1/4 ph tr hd													
11	Screw, #8 x 3/8" sl ovl	86914					86914							
12	Plate, knob retainer	82024					82024							
13	Knob, grind select	82022					82022							
14	Pointer, knob	88027					88027							
15	Screw, #6-32 x 1/4"	86866					86866							
16	Plate, detent	83361	82025				83361	82025						
17	Screw, #8-32 x 1/4"	86224					86224							
18	Screw, grind adjust	82023			86434		82023			86434				
19	Pin, grind adjust	71298					71298							
20	Screw, 5/16-18 x 1"	86887					86887							
21	Plunger, detent	83318					83318							
22	Spring, detent	83443					83443							
23	Grinder cap	82021			86439		82021			86439				
24	Cover, shear	86355					86355							
25	Disc, shear (890 - Shear pin)	86123			86620		86123			86620				
26	Drive, shear	86154			-		86154			-				
27	Feedworm	85188			86468		85188			86468				
28	Burr set	85281W			86430		85281W			86430				
29	Screw, #10-32 x 5/16"	350-00014					350-00014							
30	Feedworm spring	-			86432		-			86432				
31	Tension spring	86118			86438		86118			86438				
32	Thrust collar	86304			-		86304			-				
33	Grinder head	84171S	84172		86435		84171S	84172			86435			
34	Nut, 1/4-20 cage	86864					86864							
35	Motor, 1/2hp 120VAC 60Hz [230VAC 60Hz]	86419			86581		[86421]			86581				
36	Gasket, hopper	88211					88211							
37	Finger guard	83324					83324							
38	Hopper	83356		88280		82365		83356			88280			
39	Circuit breaker, 10amp for 120VAC [5amp for 230VAC]	86618					[83107]							
40	Screw, #10 x 1/2", sems, tr ph	86868					86868							
41	Screw, spout flap	-	60288				-	60288						
42	Eyelet, 0.162 ID, rolled edge	-	82039				-	82039						

Parts Diagram and List (continued)

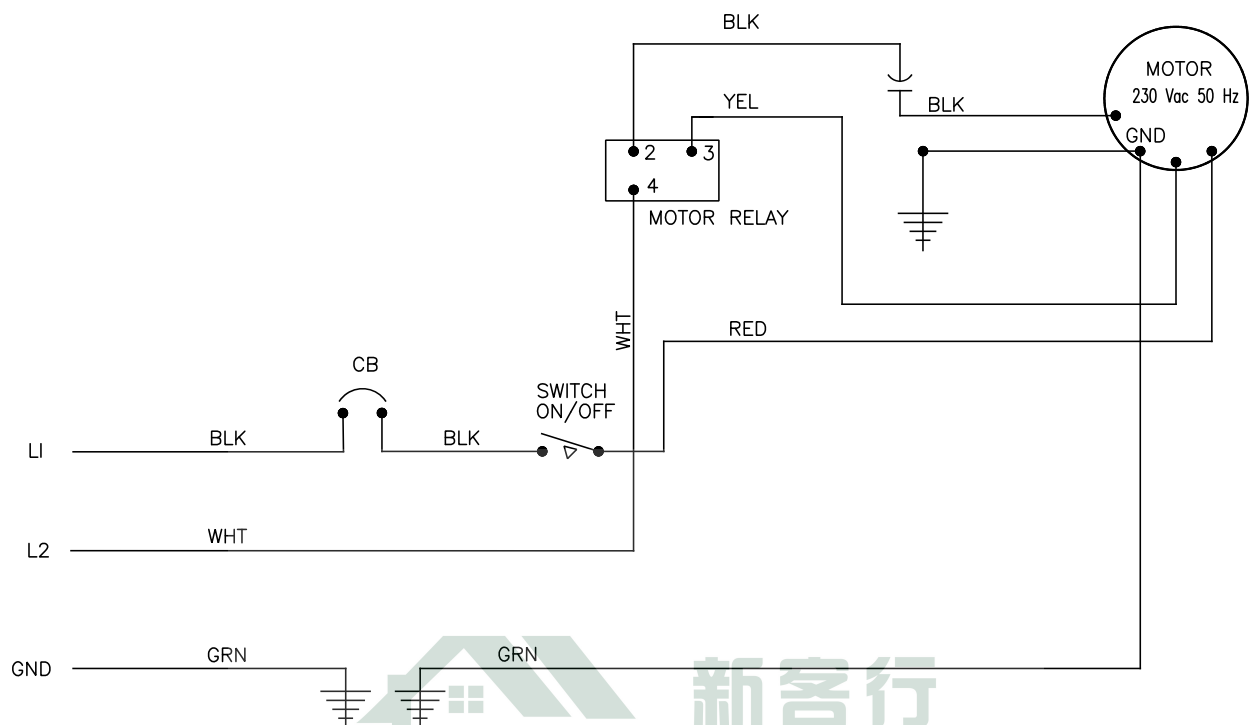
800 Series

Item #	DESCRIPTION	120V GROCERY GRINDER PART NUMBERS					230V GROCERY GRINDER PART NUMBERS							
		810-BS	835-BS	875-BS & 875-RS	890-BS	890-B-T	810E-BG	835-B- 230VG	835-R- 230VG	835-R- 230VS	875-B- 230V	875-R- 230V	890E-BG	
43	Spout flap	-	82036				-	82036						
44	Screw, chaff spring	07023-01	86806				07023-04	86806						
45	Chaff spring	84154	82026				84154	82026						
46	Screw, #8-32 x 3/8"	82124					82124							
47	Spout	88033	80088	82019			88033	80088			82019			
48	Motor shelf	83334					83334G	83334	83334G	83334	83334	83334	83334G	
49	Bolt, 1/4-20 x 5/8"	86872					86872							
50	Nut, 1/4-20 Nylon	-	60007			87049	-	87049	60007					
51	Bushing, spacer	-	83253				-	83253						
52	Bag, actuator	-	80084				-	80084						
53	Bushing, flanged	-	83252				-	83252						
54	Bracket, switch	-	83250				-	83250						
55	Switch, micro	-	80083				-	80083						
56	Screw, #4-40 x 5/8" sl bd hd	-	86928				-	86928						
57	Nut, 4-40 hex	-	86929				-	86929						
58	Capacitor, 120VAC 60Hz [230VAC 50Hz]	86144					[86179]							
59	Screw, #8-32 x 3/8"	86874					86874							
60	Screw, #8-32 x 1/4"	-					-							
61	Relay, 120VAC [Relay, 230VAC]	-	85303				-	[85275]			[83106]			
62	Tidy tray drawer	-	83323							83323				
63	Tidy tray cover	-	83322				-	83322						
64	Power cord, standard 120VAC [1.5MM CE]	86222					[61453]							
65	Strain relief, standard cord	86071					86071							
66	Switch, start	70449	70445	88056	88056		70449	70445			88056			
67	Switch, stop	-	83327	88057			-	83327			88057			
70	Screw, #6-32 x 1/4", SS	-					86993							
71	Relay, Motor Start, 230VAC	-					86424							
72	Finger guard	-					-					83297		
73	Screw, #8-32 x 1/2", Ground	86867					86867							
74	Nut, #8-32, KEPS	86810					86810					86810		
77	Harness, wiring	83341	82029				84143	82029						
78	Harness, bag switch	-	80086				-	80086						

Wiring Diagram (continued)

800 Series 230V, 50Hz Wiring Diagrams

MODEL 810 – 230V, 50HZ WIRING DIAGRAM



MODEL 835, 875, 890 – 230V, 50HZ WIRING DIAGRAM

